

PLEASE NOTE

- ALL activities in the Open Space are at your own risk
- Take plenty of water
- Wear sturdy calf-high shoes/boots
- Access the area with a partner
- Let someone know where you are going and when you expect to return
- There are no developed parking areas at the access points
- Please be courteous to motorists and members when parking on the roads or access easements
- Terrain can be rugged & hazardous
- Poisonous snakes and spiders may be encountered
- Mountain lion, bear, coyote, and other indigenous wildlife are also present
- No hunting
- No trapping
- No dumping

FIRE RESTRICTIONS

- Fire Marshall - 866-2040
- Local Fire Dept. - 866-2470
- Emergency - 911

Remember, the easements and Open Space are remote, rugged and there are many hazards. If you are not familiar with the area, please check in with the TGIA at 505 864-2345 (Mon.Tues.Thurs.Fri 9:00-4:00)

ACTIVITIES INCLUDE

- HIKING
- CLIMBING
- CAMPING / PICNICKING
- CATTLE / GAME TRAILS
- HORSEBACK RIDING
- ATV / MOUNTAIN / DIRT BIKING
- HANG GLIDING
- SPECTACULAR SCENERY
- BIRD WATCHING
- WILDFLOWERS
- WILDLIFE VIEWING
- FASCINATING GEOLOGY

FOR FURTHER INFORMATION

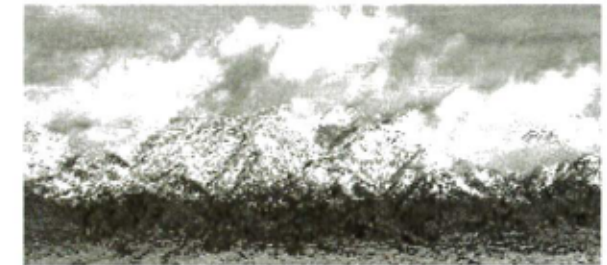
Tierra Grande Improvement Association
P.O. Box 1388
480 Rio Communities Blvd, Suite H
Belen, New Mexico 87002
505-864-2345
FAX: 505-861-3903
E-Mail: info@tierragrande.org



Tierra Grande
Improvement Association, Inc.

**WELCOMES OUR
MEMBERS**

**To
Tierra Grande's
"OPEN SPACE"**



J Magnussen

**AN OPPORTUNITY FOR YOU
TO EXPERIENCE
THE TERRAIN & RUGGED
BEAUTY OF DESERT PLAINS
AND THE
MANZANO MOUNTAINS**

TIERRA GRANDE OPEN SPACE

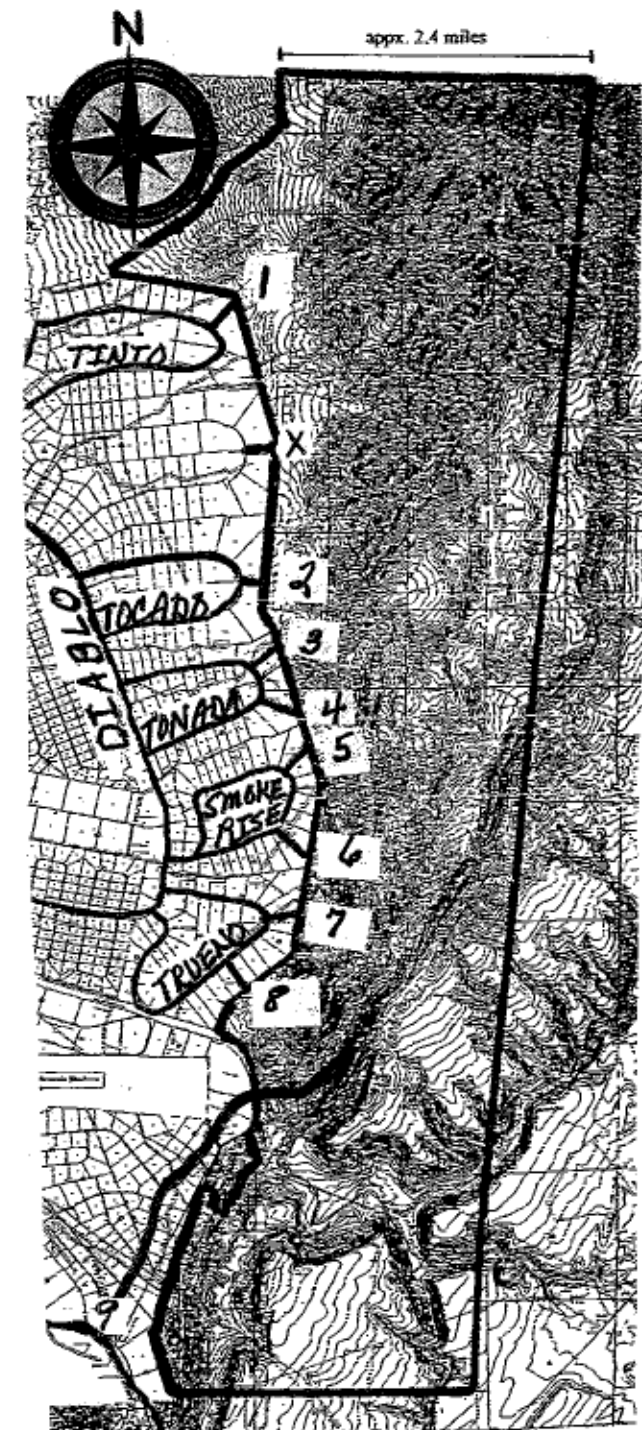
- Our Open Space consists of over 14,000 acres immediately to the east of Tierra Grande residential properties. It is for the benefit of Tierra Grande members while at the same time preserving its usage for future generations. There are nine easements (See attached map) that provide access to the Open Space. Access easements are fifty feet wide and bordered by private property on each side. These easement points are marked by metal poles at their corners. The majority of the access points are easily accessible by county road. The actual access points are undeveloped and there is little to no off-road parking areas.

GENERAL USE GUIDELINES

- Be courteous. Access easements and the Open Space are for the enjoyment of all Tierra Grande members.
- Parked vehicles are vacated at their own risk.
- Primitive camping is permitted in the Open Space but there are no facilities.
- Obey all fire restrictions. Check with the TGIA before starting any fires. When fire hazards are high, no fires are permitted on the easements or in the Open Space.
- Chopping or removal of firewood is strictly prohibited on easements and in the Open Space.

GENERAL USE GUIDELINES (Cont'd)

- Pack it in – Pack it out. Keep your impact to a minimum when on the easements and in the Open Space. Please, take your trash out when you leave.
- All archaeological artifacts, petroglyphs, associated historic and archaeological sites and boulders are protected.
- Stay on established trails. Walking or driving off the trails can damage fragile desert habitat and lead to increased erosion.
- Do not disturb, remove, harass, trap or hunt any animal, bird, reptile, amphibian, insect in the easement or Open Space.
- Do not disturb, cut, chop, or remove any tree, shrub, plant, cactus or grass.
- Any type of high impact recreational activity must have a TGIA approved sticker affixed. (See TGIA Off Highway Vehicle Policy)
- Do not remove, alter or damage any sign barrier, fence, gate or gate on private property.
- Do not post any notices or signs without the permission of TGIA.
- Do not set off fireworks or other explosives in the easements or the Open Space.
- All non-property owner activities require TGIA approval.
- All State and County laws apply in Tierra Grande, the easements and Open Space.



#9 Access Point - Contact TGIA for Combination to Locks/Gates