

AMENDED AND CORRECTED PLAT OF
UNIT ONE
OF
TIERRA GRANDE
CASA COLORADA AND BELEN GRANTS
VALENCIA COUNTY, NEW MEXICO

Note:
Bearings shown hereon are based on the New Mexico State Plane Coordinate Grid, Central Zone

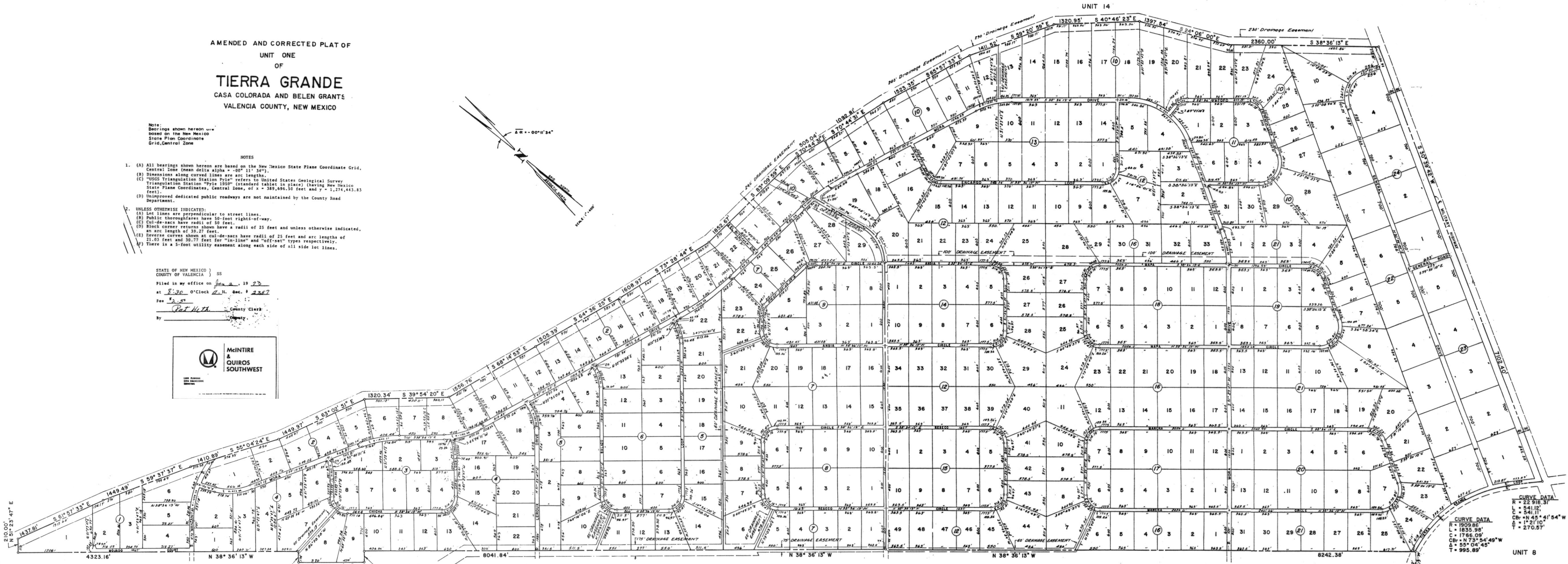
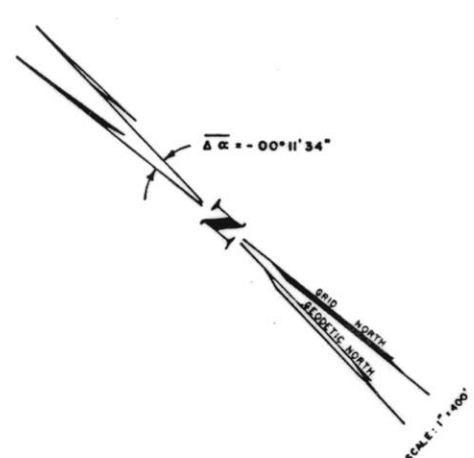
NOTES

- (A) All bearings shown hereon are based on the New Mexico State Plane Coordinate Grid, Central Zone (mean delta alpha = -0° 11' 34").
 - (B) Dimensions along curved lines are arc lengths.
 - (C) "USGS Triangulation Station Pyle" refers to United States Geological Survey Triangulation Station "Pyle 1950" (standard tablet in place) (having New Mexico State Plane Coordinates, Central Zone, of x = 389,696.50 feet and y = 1,274,443.83 feet).
 - (D) Unimproved dedicated public roadways are not maintained by the County Road Department.
2. UNLESS OTHERWISE INDICATED:
- Lot lines are perpendicular to street lines.
 - Public thoroughfares have 50-foot rights-of-way.
 - Cul-de-sacs have radii of 50 feet.
 - Block corner returns show a radii of 25 feet and unless otherwise indicated, an arc length of 39.27 feet.
 - Reverse curves shown at cul-de-sacs have radii of 25 feet and arc lengths of 21.03 feet and 30.77 feet for "in-line" and "off-set" types respectively.
 - There is a 5-foot utility easement along each side of all side lot lines.

STATE OF NEW MEXICO }
COUNTY OF VALENCIA } SS

Filed in my office on June 2, 19 23
at 8:30 o'clock A.M. Sec. 1 2357

Fee \$ 2.50
By Pat Heth County Clerk



CURVE DATA
R = 22 918.31'
L = 541.12'
C = 541.11'
CB = N 45° 41' 54" W
Δ = 1° 21' 10"
T = 270.57'

CURVE DATA
R = 1909.86'
L = 1835.98'
C = 1766.09'
CB = N 73° 54' 49" W
Δ = 55° 04' 45"
T = 995.89'

UNIT 8

UNIT 2

Tie to USGS Triangulation Station "Pyle"