

RIO GRANDE ESTATES

UNIT 2
RIO GRANDE ESTATES

UNIT 9

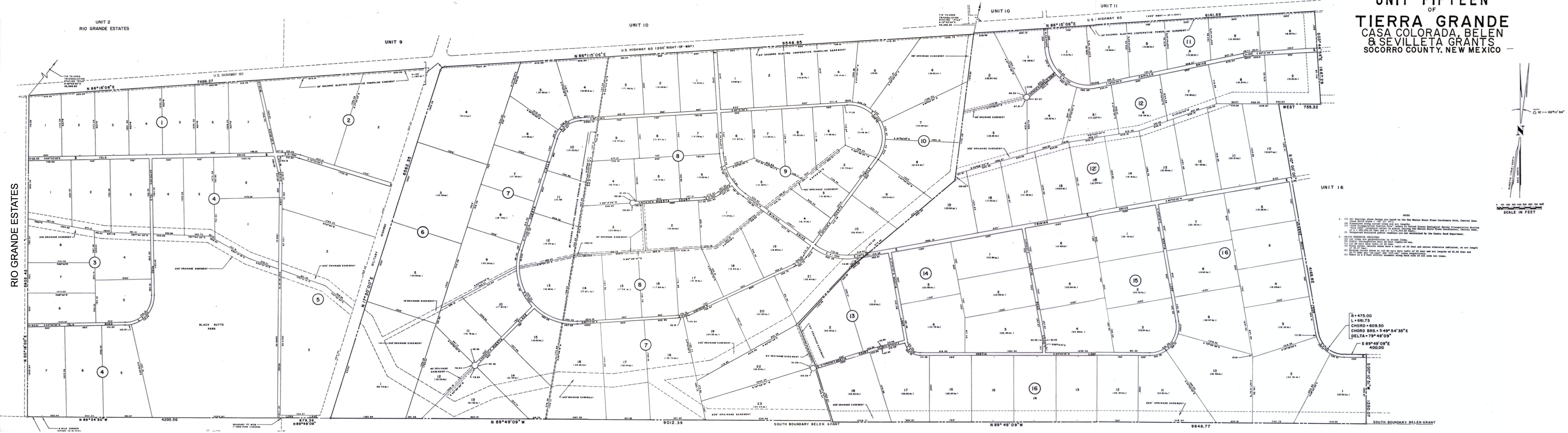
UNIT 10

UNIT 10

UNIT 11

UNIT 16

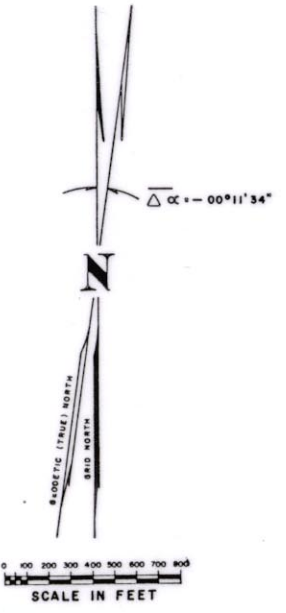
UNIT FIFTEEN OF TIERRA GRANDE CASA COLORADA, BELEN & SEVILLETA GRANTS SOCORRO COUNTY, NEW MEXICO



- NOTES
- (1) All bearings shown herein are based on the New Mexico State Plane Coordinate Grid, Central Zone.
 - (2) All distances shown herein are in feet.
 - (3) All bearings and distances are based on the United States Geological Survey Triangulation Station No. 1111 (Central Zone) as shown on the New Mexico State Plane Coordinate Grid, Central Zone.
 - (4) All bearings and distances are based on the United States Geological Survey Triangulation Station No. 1111 (Central Zone) as shown on the New Mexico State Plane Coordinate Grid, Central Zone.
 - (5) All bearings and distances are based on the United States Geological Survey Triangulation Station No. 1111 (Central Zone) as shown on the New Mexico State Plane Coordinate Grid, Central Zone.
 - (6) All bearings and distances are based on the United States Geological Survey Triangulation Station No. 1111 (Central Zone) as shown on the New Mexico State Plane Coordinate Grid, Central Zone.
 - (7) All bearings and distances are based on the United States Geological Survey Triangulation Station No. 1111 (Central Zone) as shown on the New Mexico State Plane Coordinate Grid, Central Zone.
 - (8) All bearings and distances are based on the United States Geological Survey Triangulation Station No. 1111 (Central Zone) as shown on the New Mexico State Plane Coordinate Grid, Central Zone.
 - (9) All bearings and distances are based on the United States Geological Survey Triangulation Station No. 1111 (Central Zone) as shown on the New Mexico State Plane Coordinate Grid, Central Zone.
 - (10) All bearings and distances are based on the United States Geological Survey Triangulation Station No. 1111 (Central Zone) as shown on the New Mexico State Plane Coordinate Grid, Central Zone.
 - (11) All bearings and distances are based on the United States Geological Survey Triangulation Station No. 1111 (Central Zone) as shown on the New Mexico State Plane Coordinate Grid, Central Zone.
 - (12) All bearings and distances are based on the United States Geological Survey Triangulation Station No. 1111 (Central Zone) as shown on the New Mexico State Plane Coordinate Grid, Central Zone.
 - (13) All bearings and distances are based on the United States Geological Survey Triangulation Station No. 1111 (Central Zone) as shown on the New Mexico State Plane Coordinate Grid, Central Zone.
 - (14) All bearings and distances are based on the United States Geological Survey Triangulation Station No. 1111 (Central Zone) as shown on the New Mexico State Plane Coordinate Grid, Central Zone.
 - (15) All bearings and distances are based on the United States Geological Survey Triangulation Station No. 1111 (Central Zone) as shown on the New Mexico State Plane Coordinate Grid, Central Zone.
 - (16) All bearings and distances are based on the United States Geological Survey Triangulation Station No. 1111 (Central Zone) as shown on the New Mexico State Plane Coordinate Grid, Central Zone.
 - (17) All bearings and distances are based on the United States Geological Survey Triangulation Station No. 1111 (Central Zone) as shown on the New Mexico State Plane Coordinate Grid, Central Zone.
 - (18) All bearings and distances are based on the United States Geological Survey Triangulation Station No. 1111 (Central Zone) as shown on the New Mexico State Plane Coordinate Grid, Central Zone.
 - (19) All bearings and distances are based on the United States Geological Survey Triangulation Station No. 1111 (Central Zone) as shown on the New Mexico State Plane Coordinate Grid, Central Zone.
 - (20) All bearings and distances are based on the United States Geological Survey Triangulation Station No. 1111 (Central Zone) as shown on the New Mexico State Plane Coordinate Grid, Central Zone.
 - (21) All bearings and distances are based on the United States Geological Survey Triangulation Station No. 1111 (Central Zone) as shown on the New Mexico State Plane Coordinate Grid, Central Zone.
 - (22) All bearings and distances are based on the United States Geological Survey Triangulation Station No. 1111 (Central Zone) as shown on the New Mexico State Plane Coordinate Grid, Central Zone.
 - (23) All bearings and distances are based on the United States Geological Survey Triangulation Station No. 1111 (Central Zone) as shown on the New Mexico State Plane Coordinate Grid, Central Zone.

R = 475.00
L = 661.73
CHORD = 609.50
CHORD BRG. = S 49° 54' 35" E
DELTA = 79° 49' 09"

S 89° 49' 09" E
400.00'



STATE OF NEW MEXICO }
COUNTY OF SOCORRO } SS
Filed in my office on 3-1-1928
at 1:00 o'clock P.M. Rec. # 1272
Fee 2.00
By John A. Rieker County Clerk
By Walter Wilson Deputy